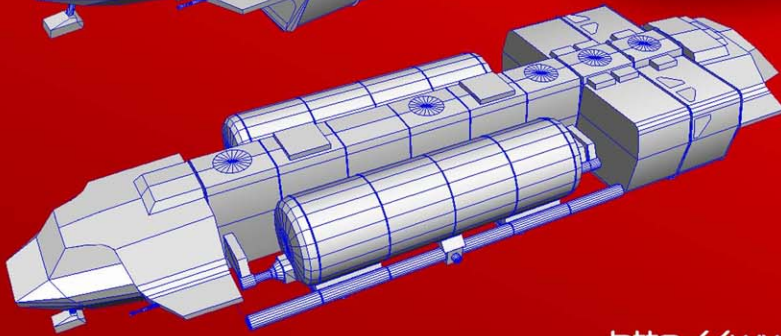
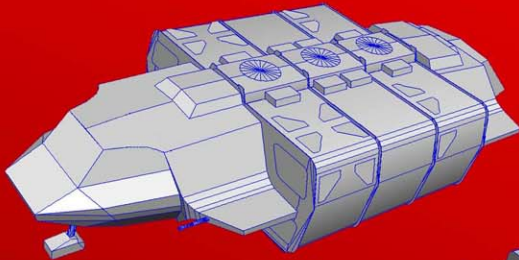
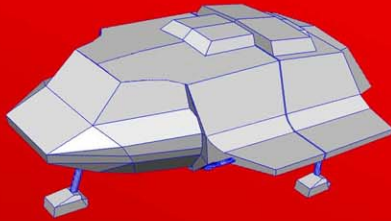




The original series



Visitors Skyfighter
Visitors Transport
Visitors Tanker

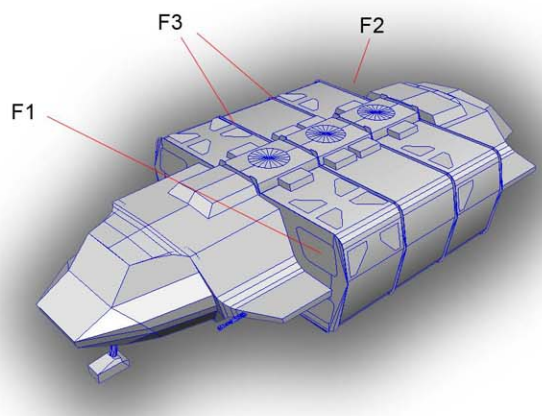
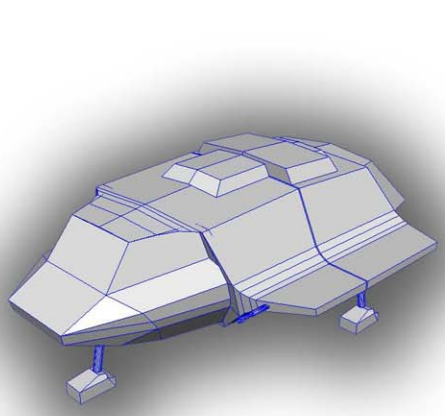
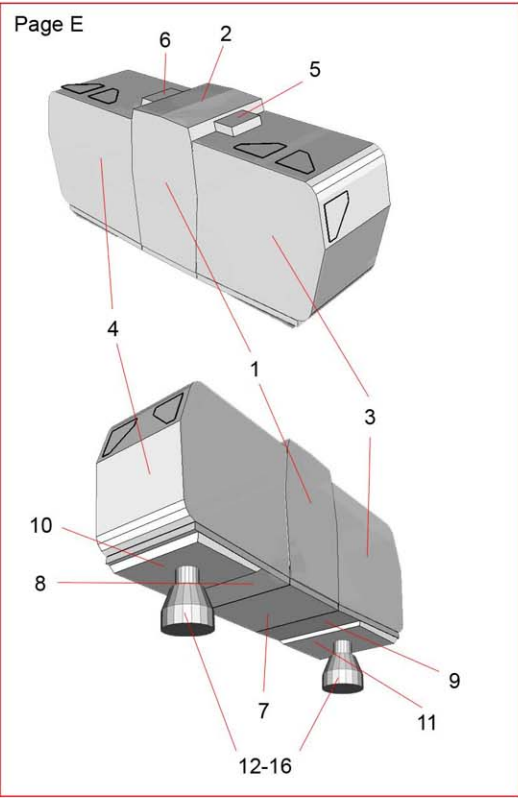
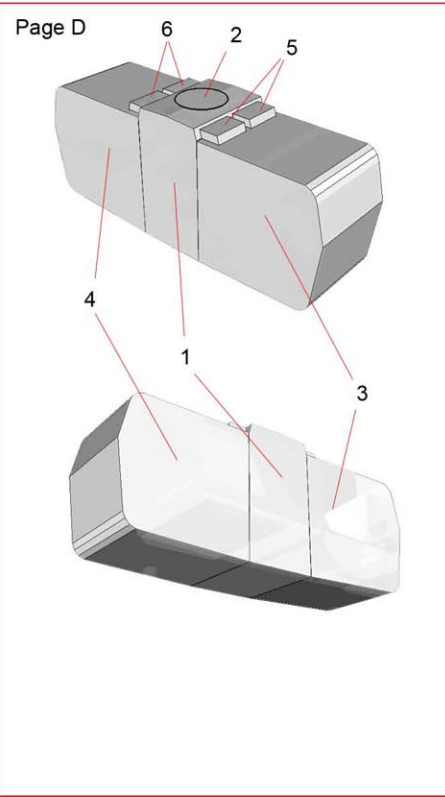
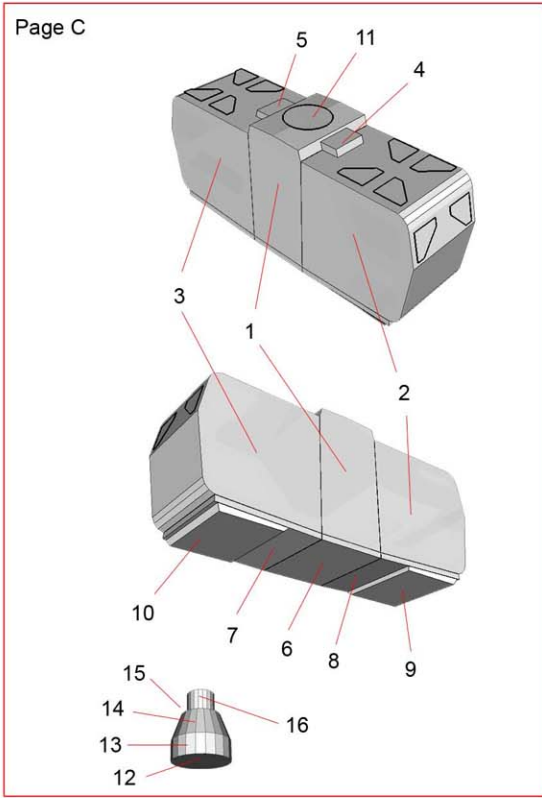
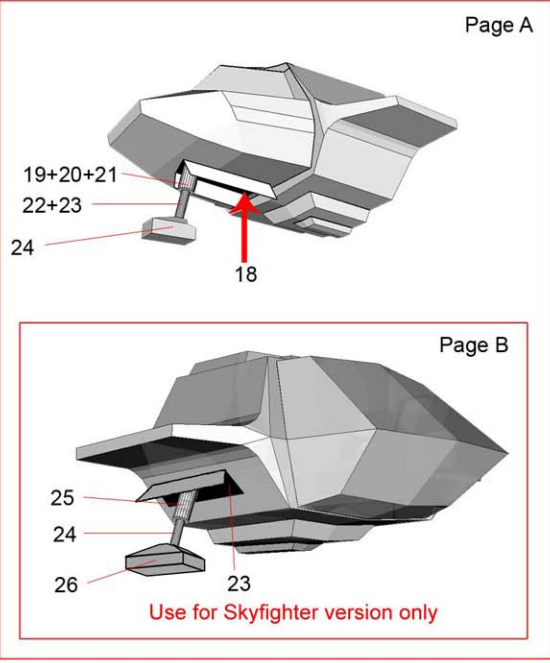
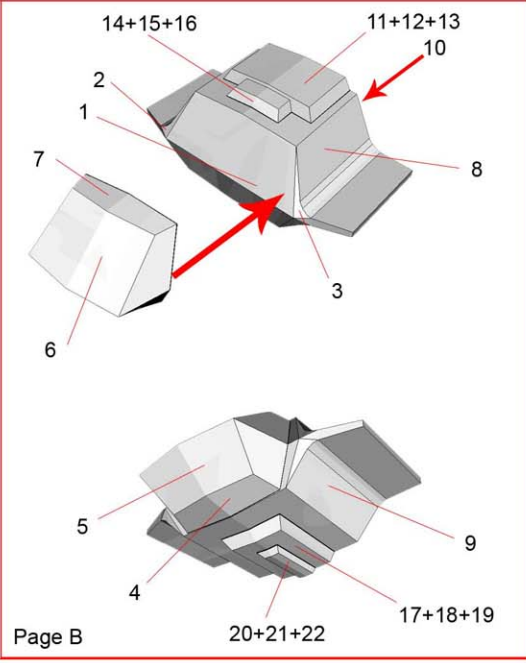
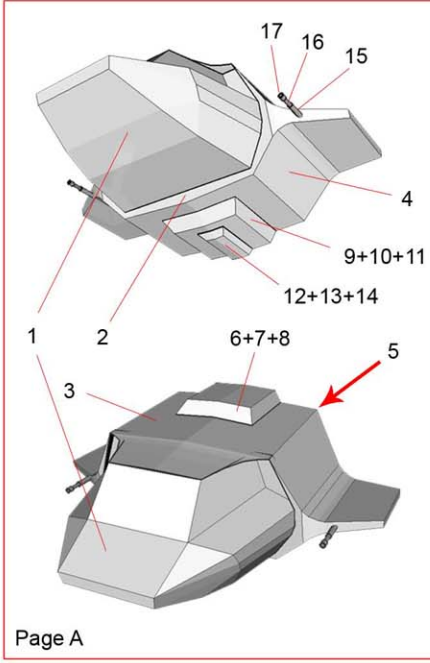
<http://www.infochaos.de/infochaos/V/V.html>



Paper model by ThunderChild

Instructions Page 1

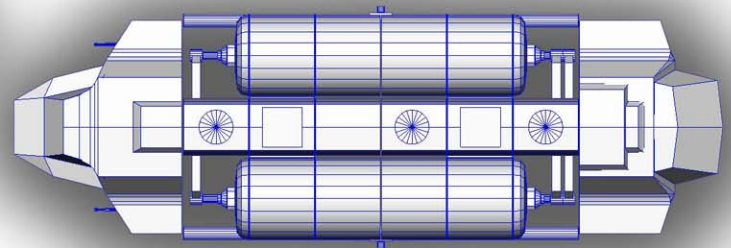
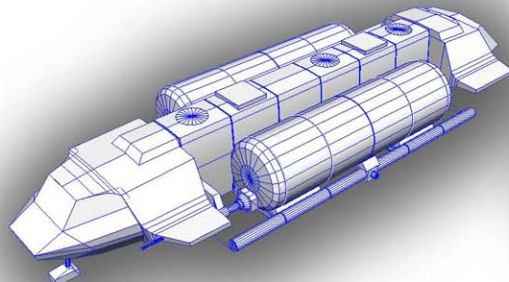
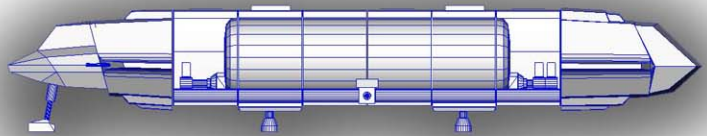
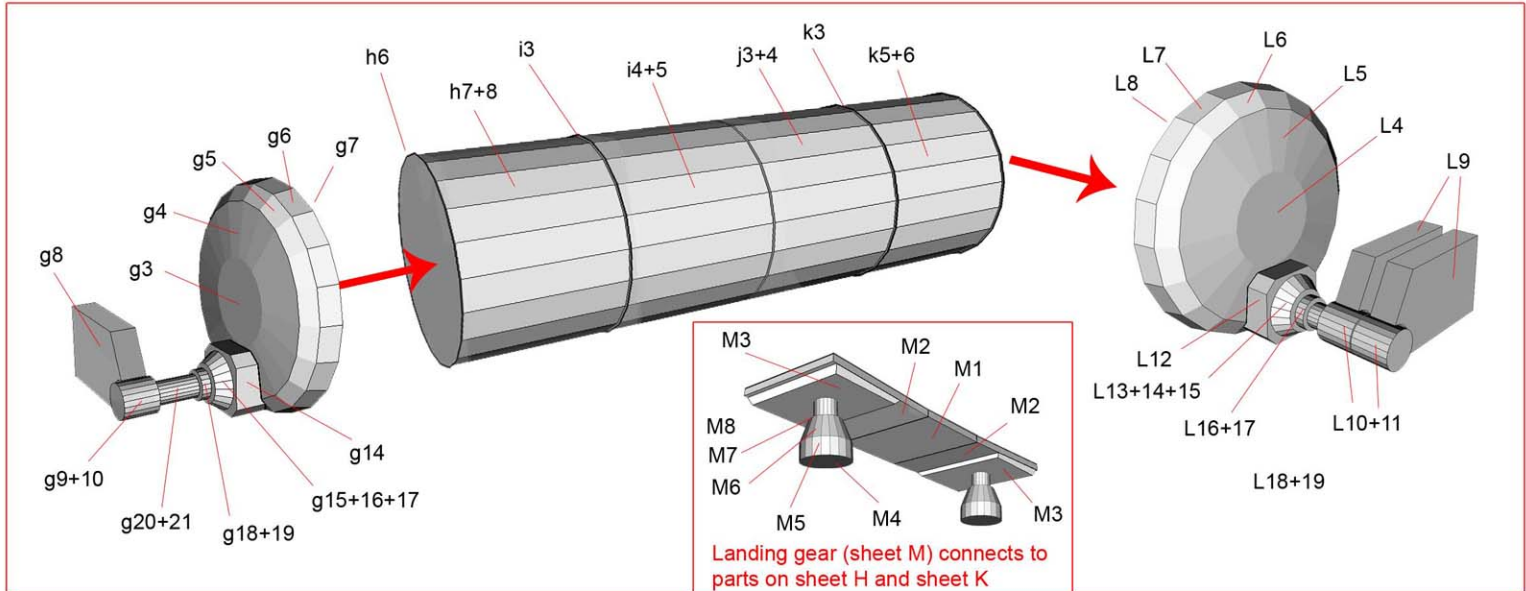
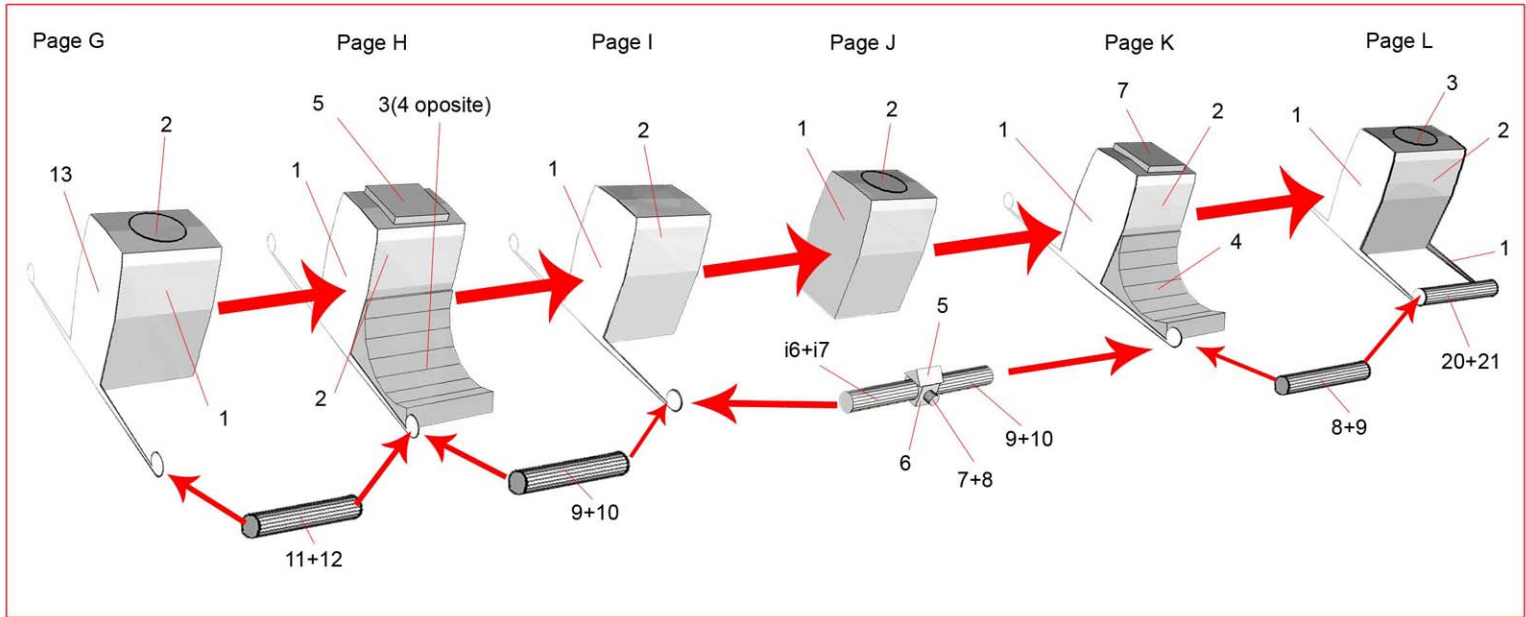
Visitors Skyfighter / Transport





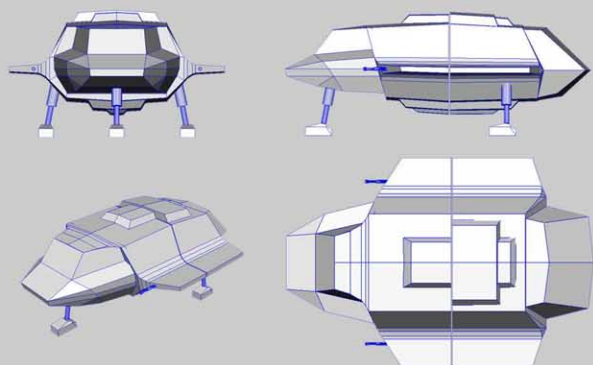
Instructions Page 2

Visitors Tanker

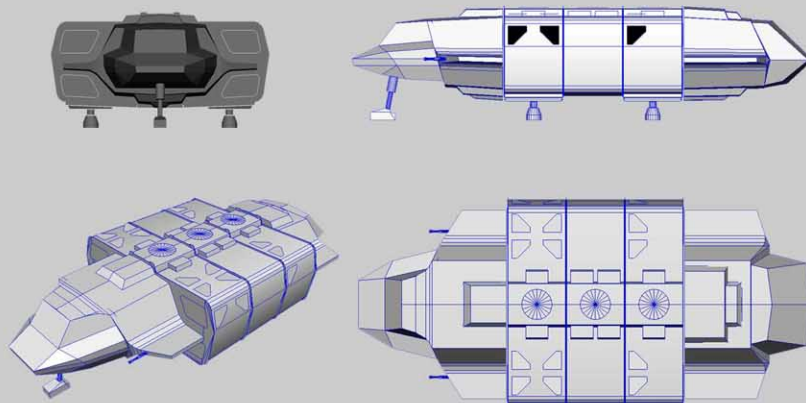




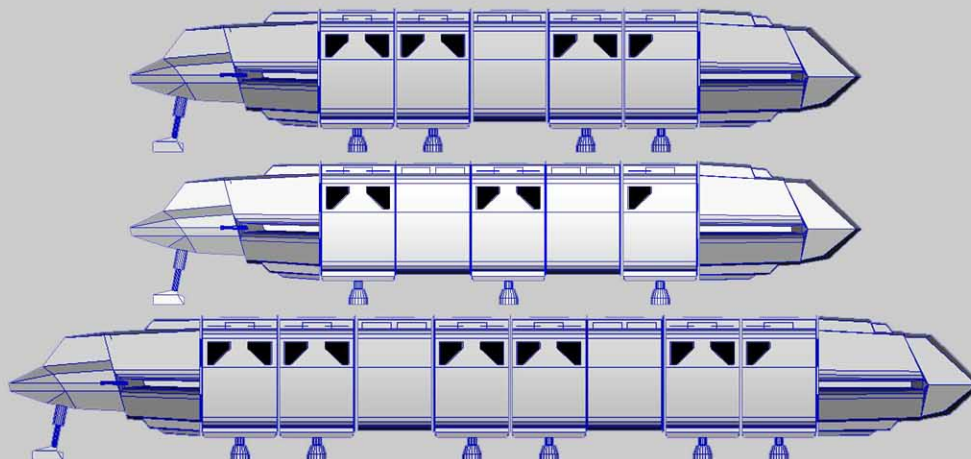
SkyFighter



Small Transport

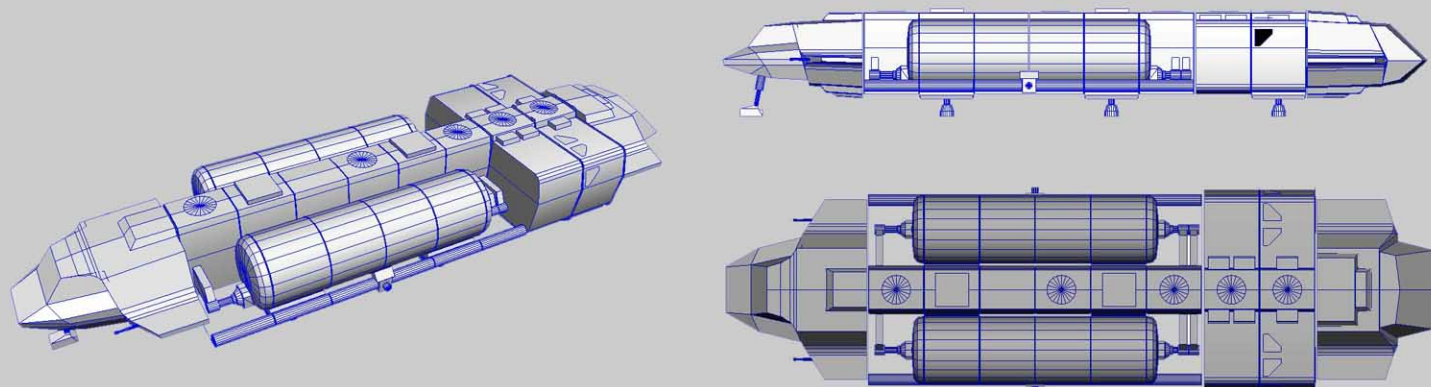


By reprinting pages C and D, you can create many different versions of the transport!

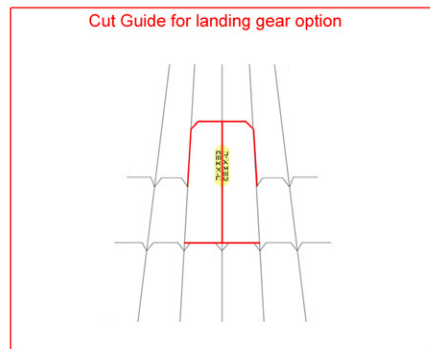
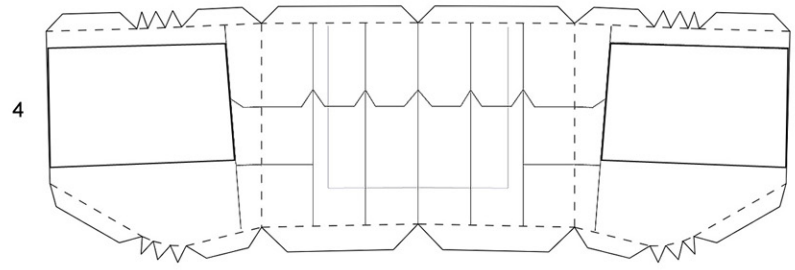
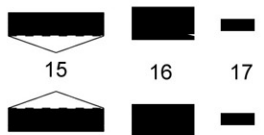
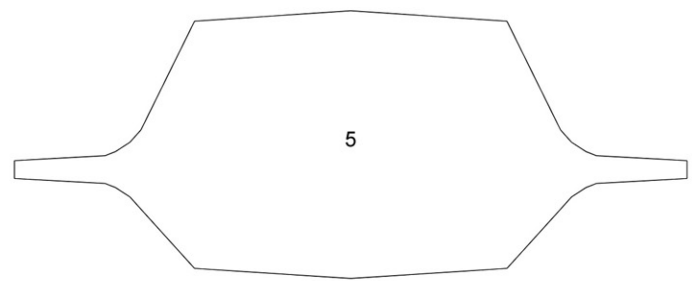
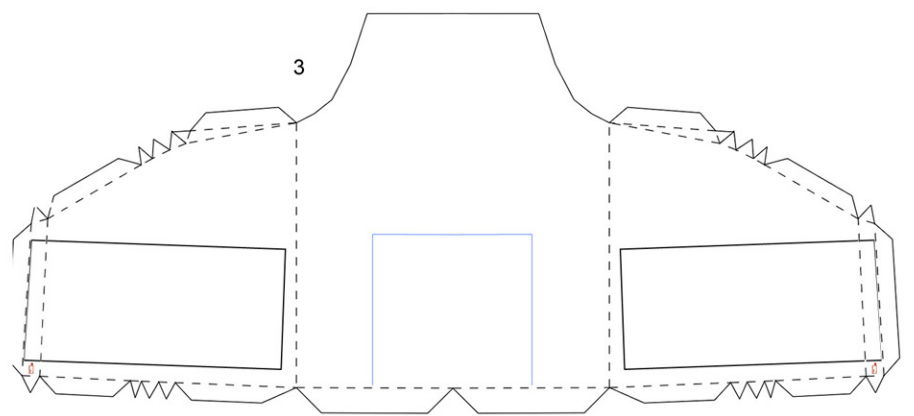
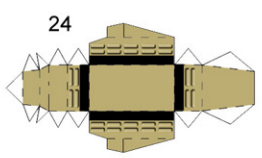
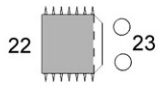
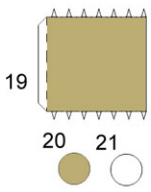
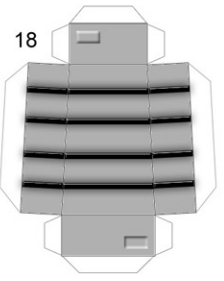
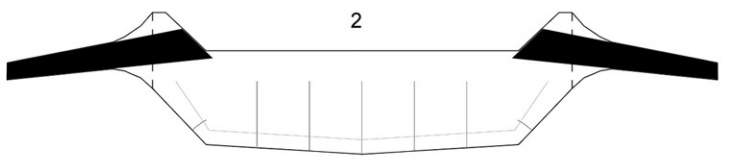
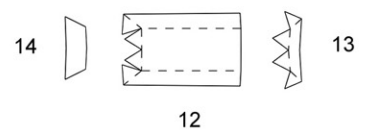
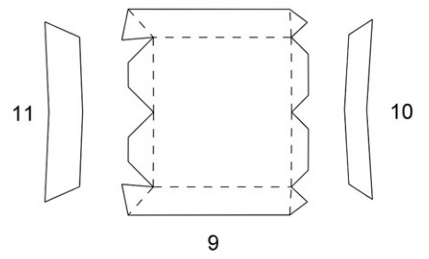
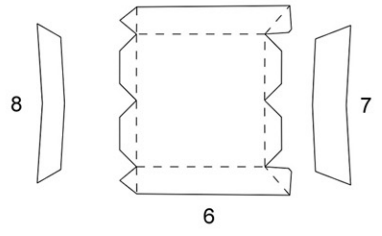
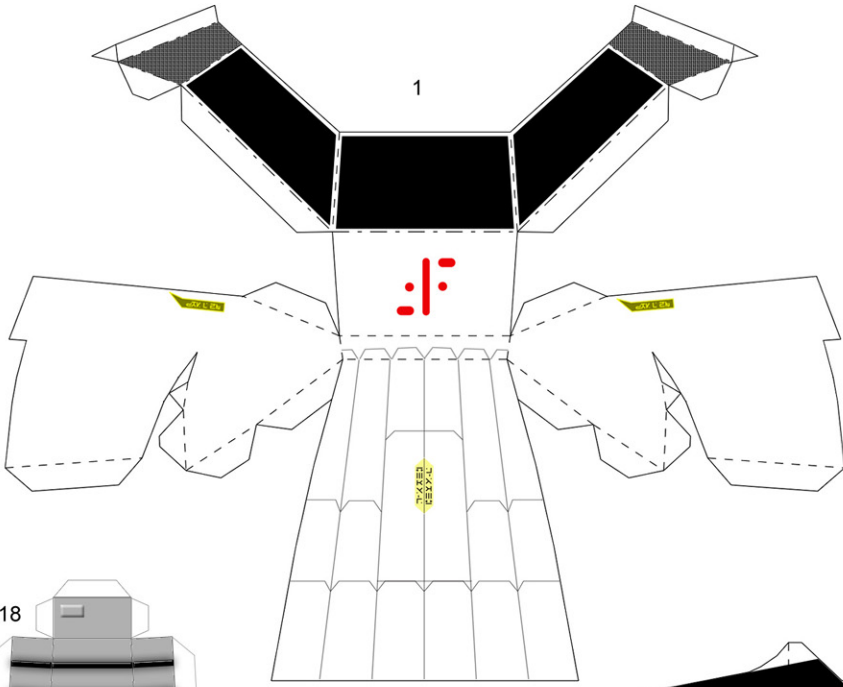


Note that page E is always the last segment and is never duplicated

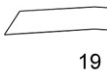
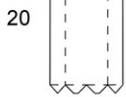
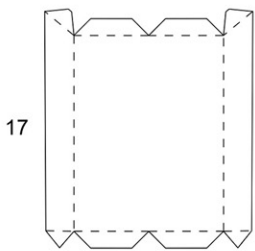
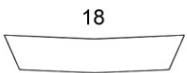
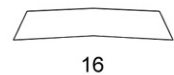
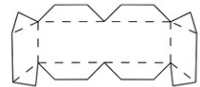
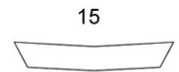
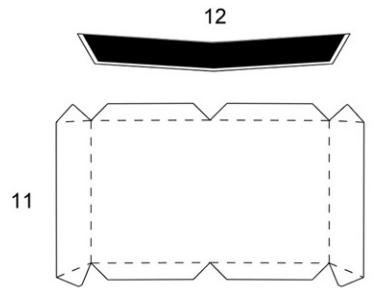
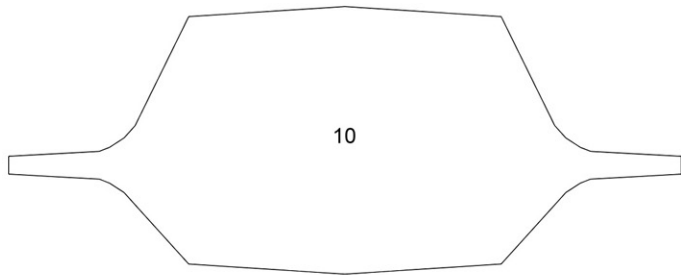
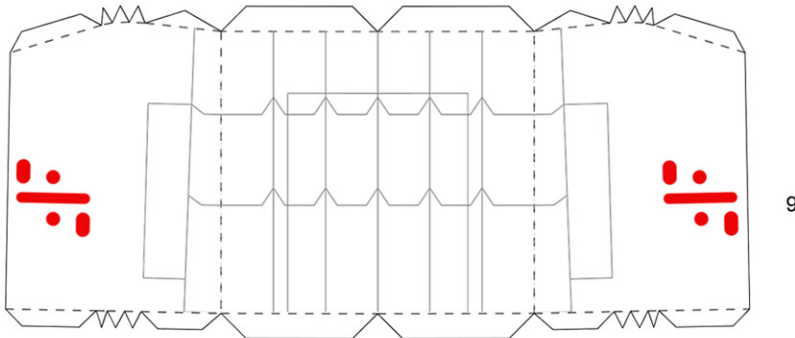
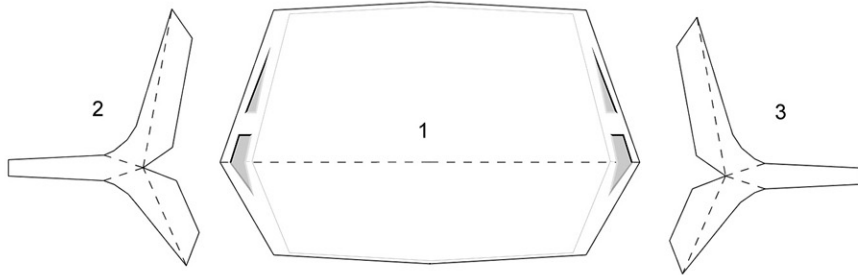
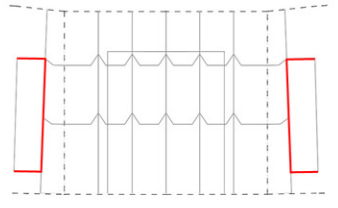
By adding pages D and E, you can create a more canon version of the tanker, as seen in the series.



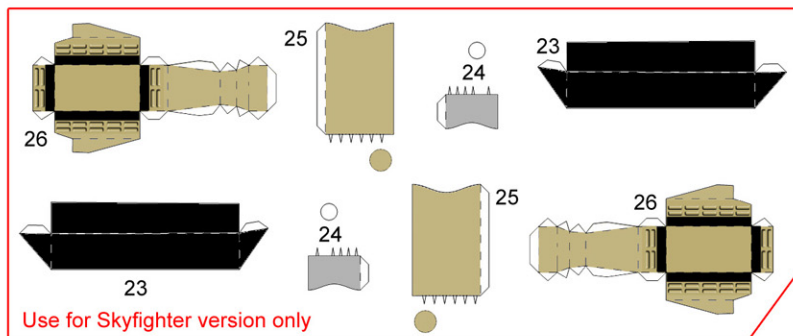
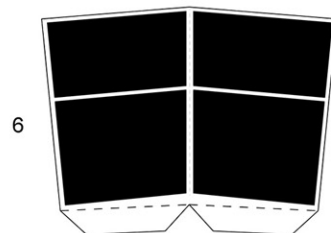
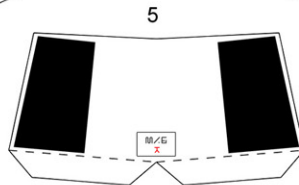
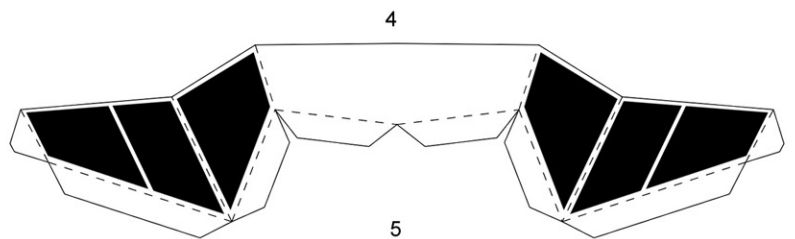
A (Shuttle Nose)



Landing gear cut guide on part 9:
SKYFIGHTER option ONLY
(Do not use for Transport and Tanker)

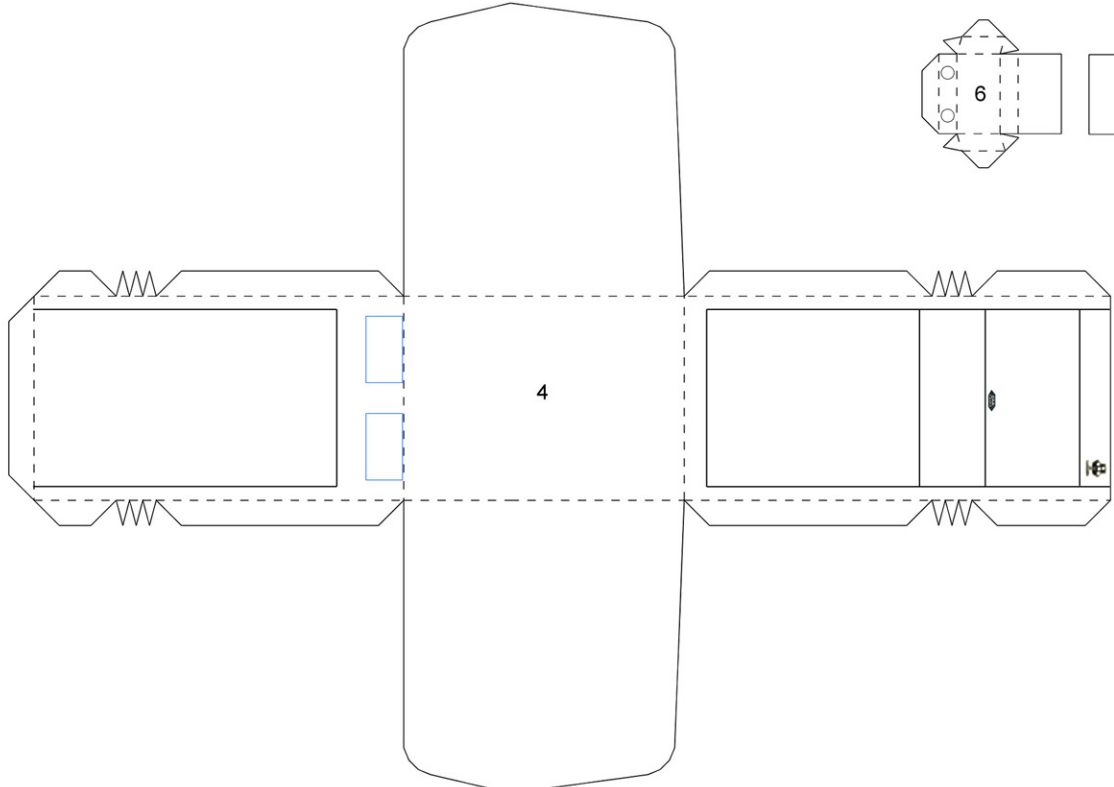
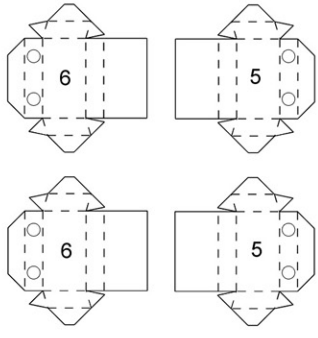
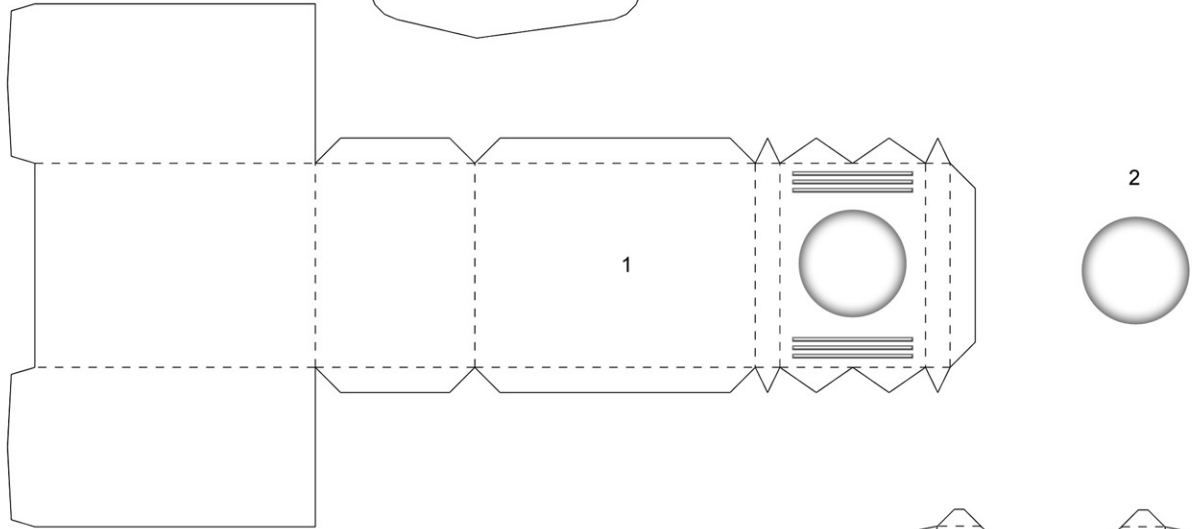
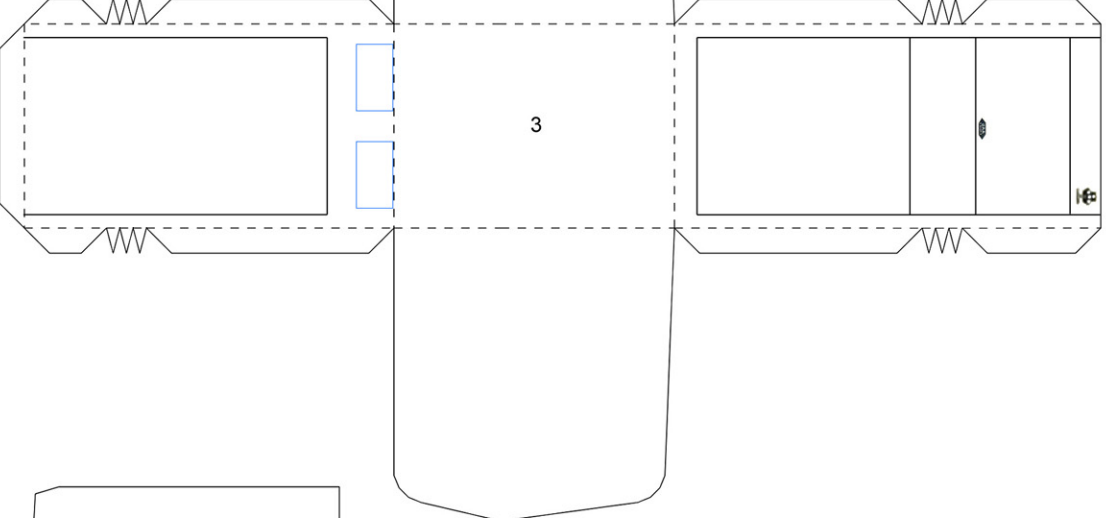


22

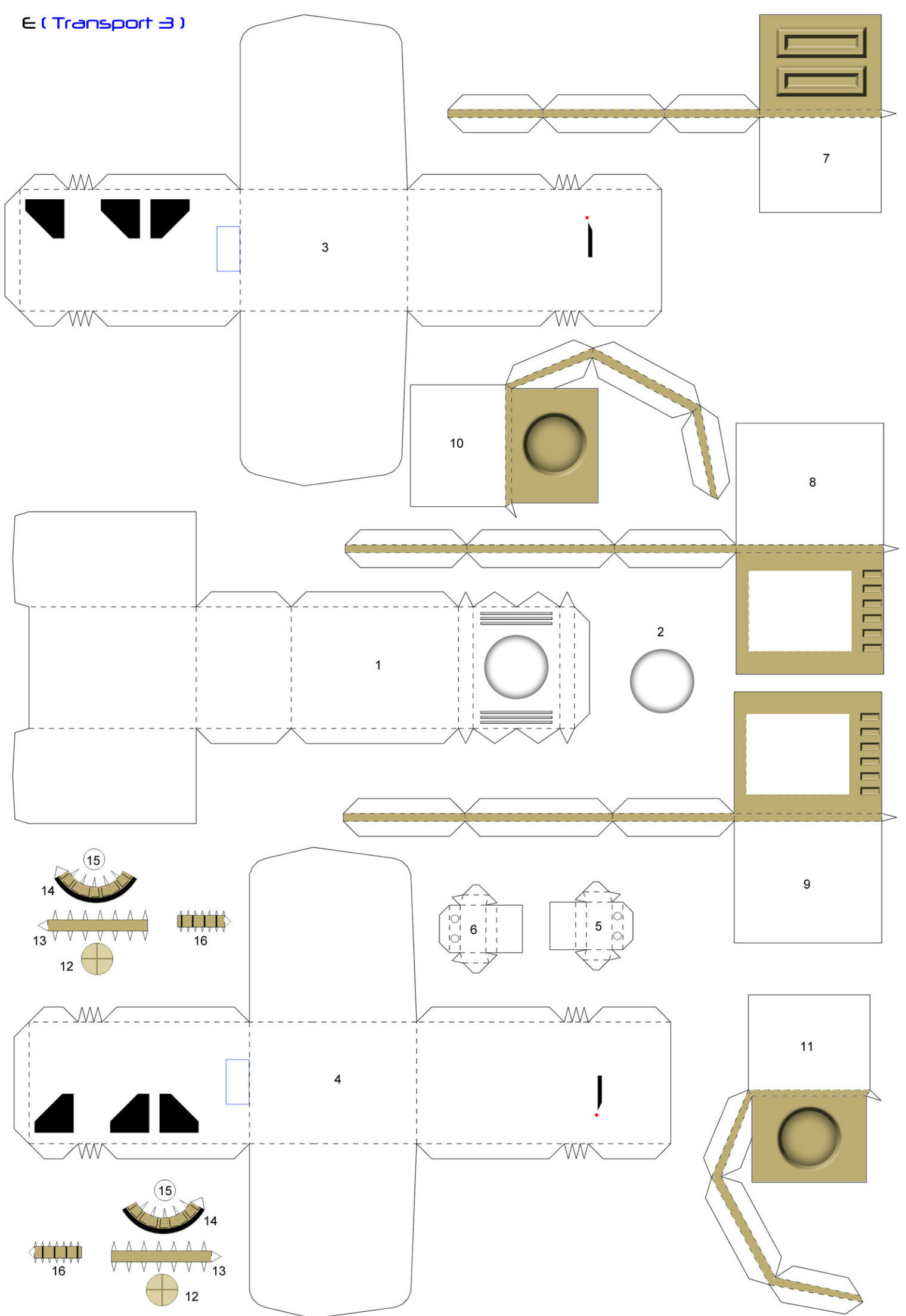


Use for Skyfighter version only

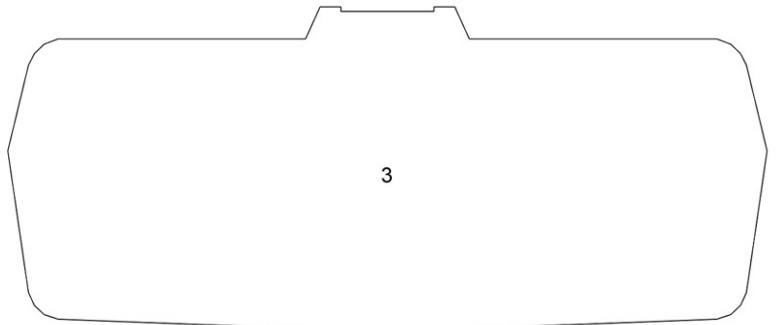
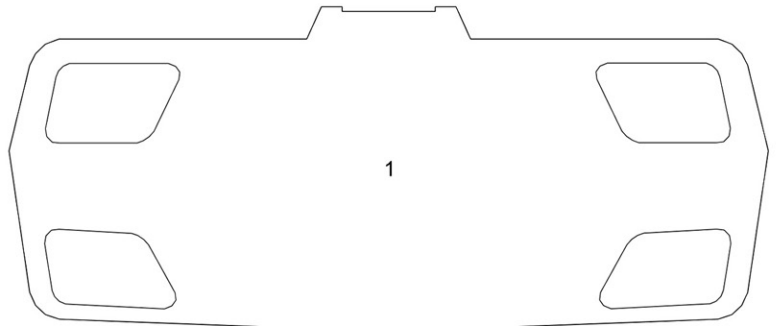
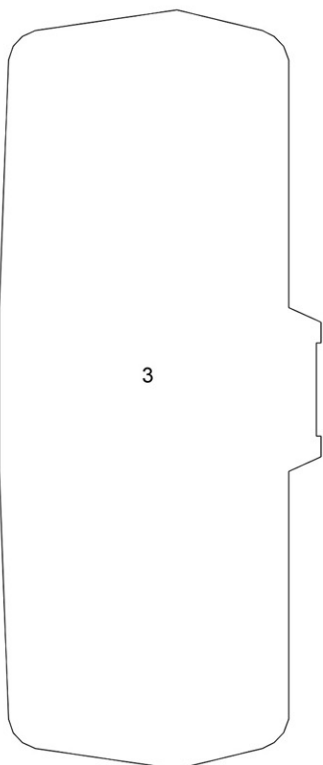
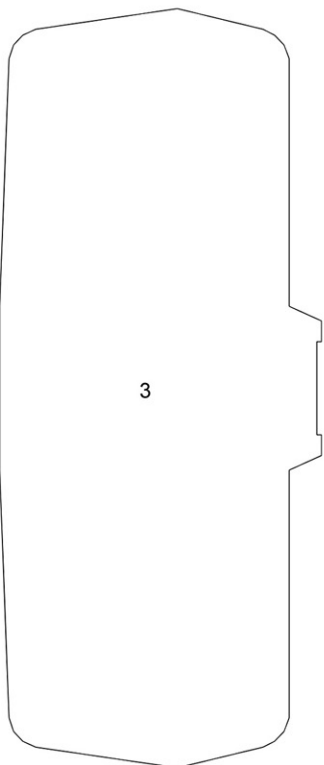
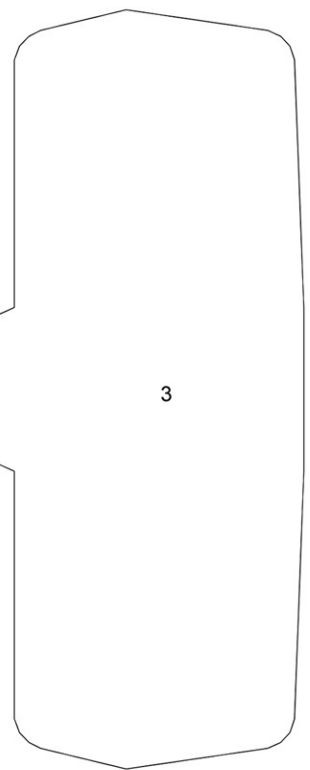
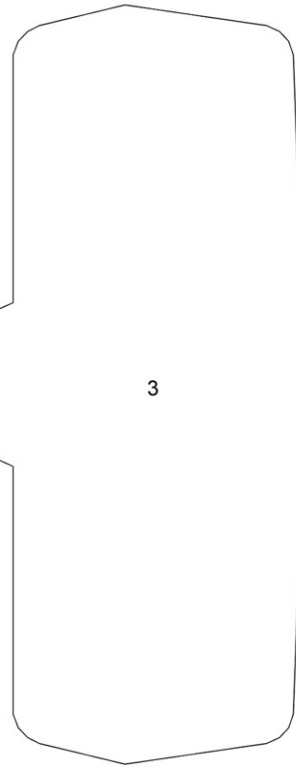
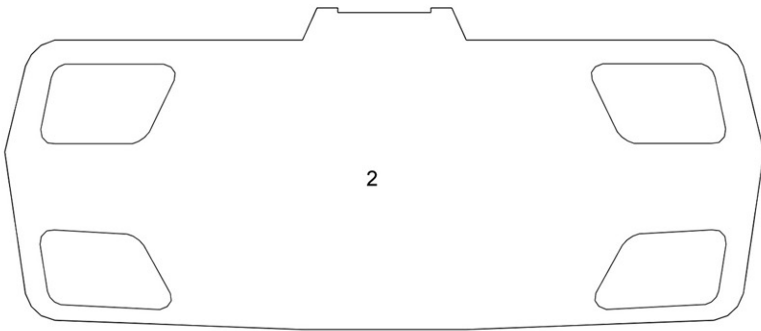
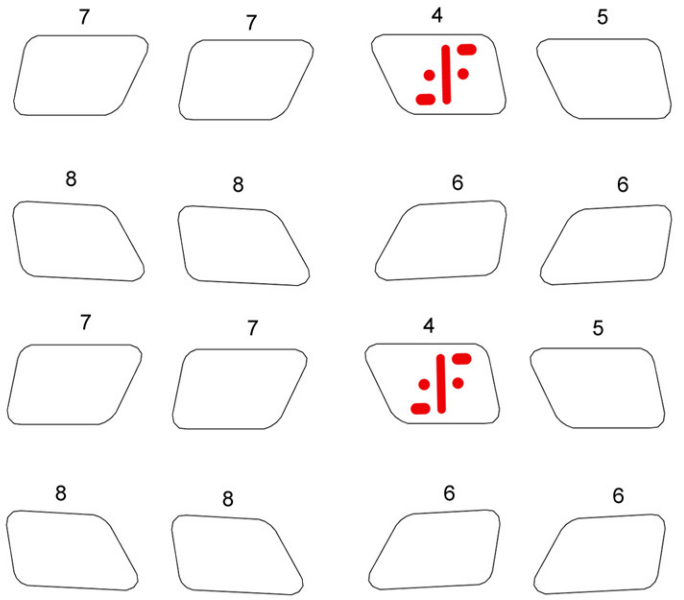
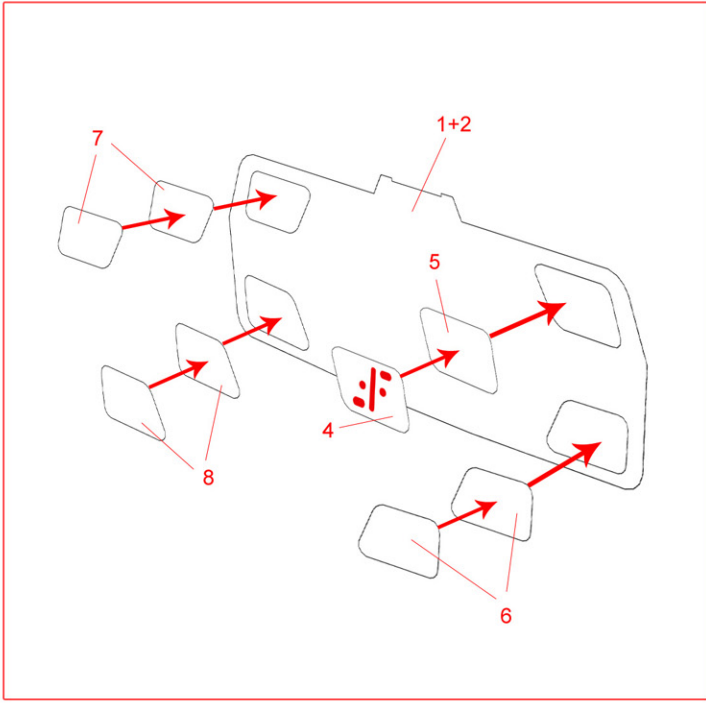
D (Transport 2)



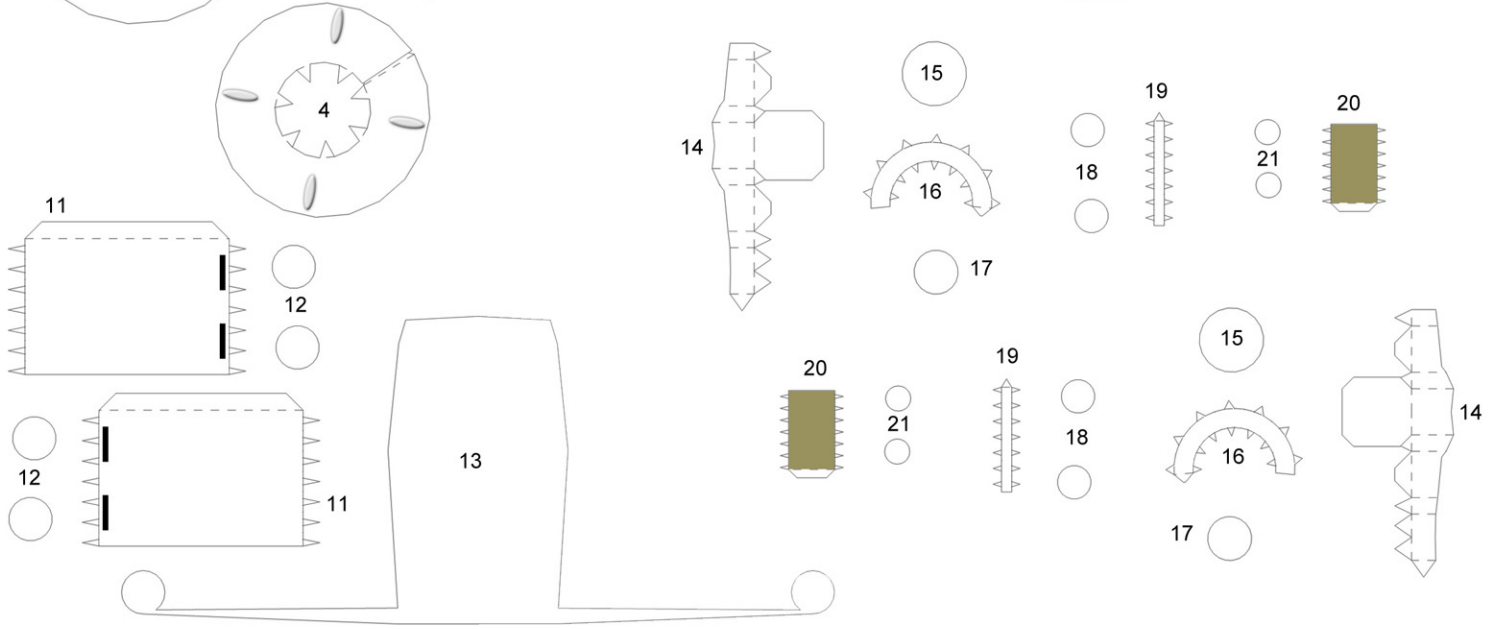
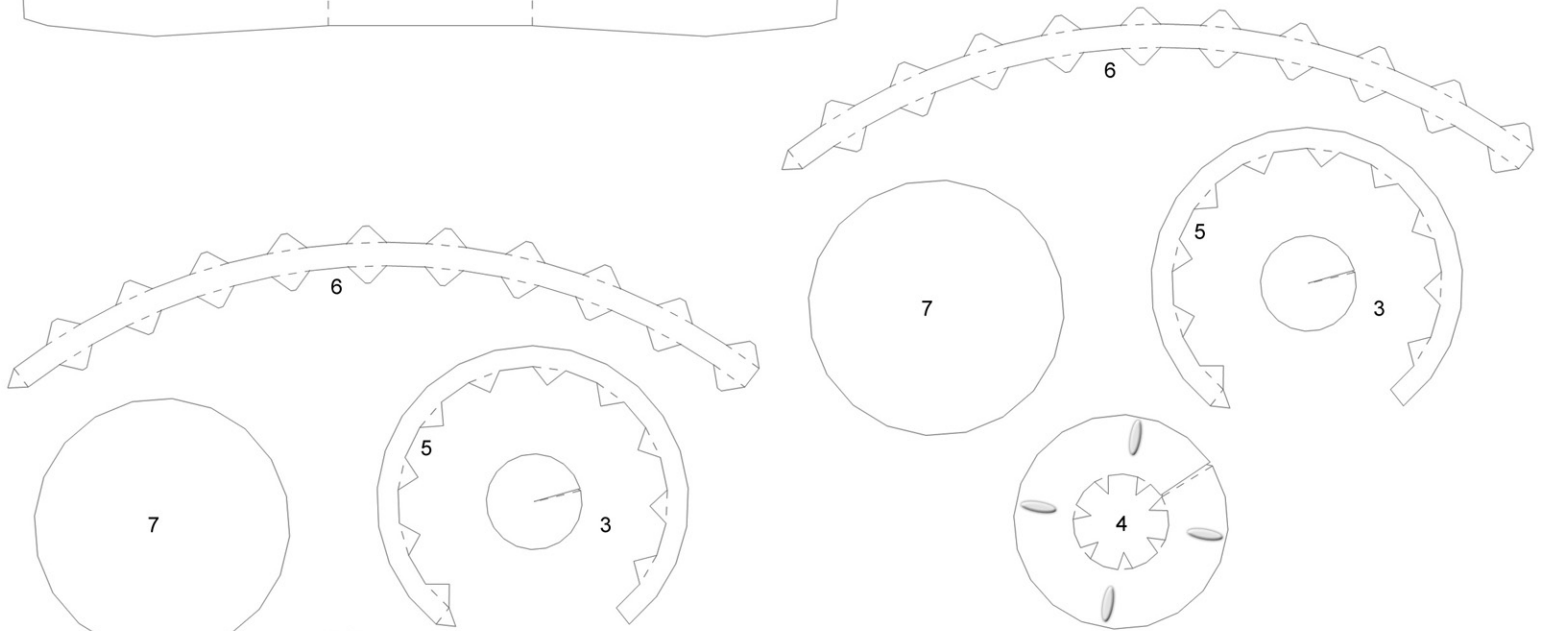
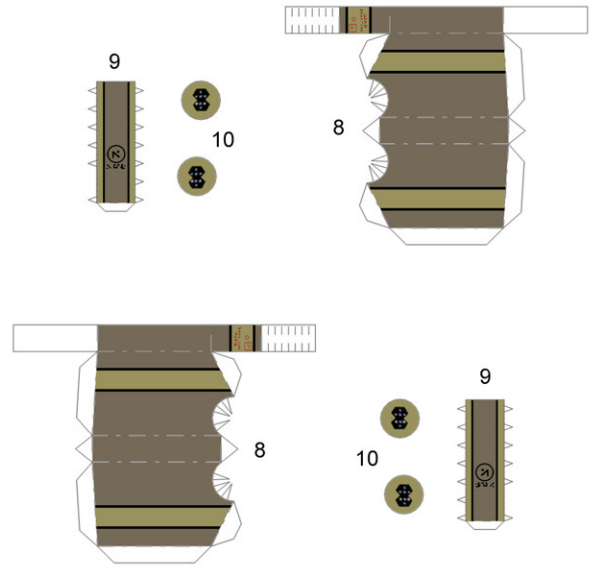
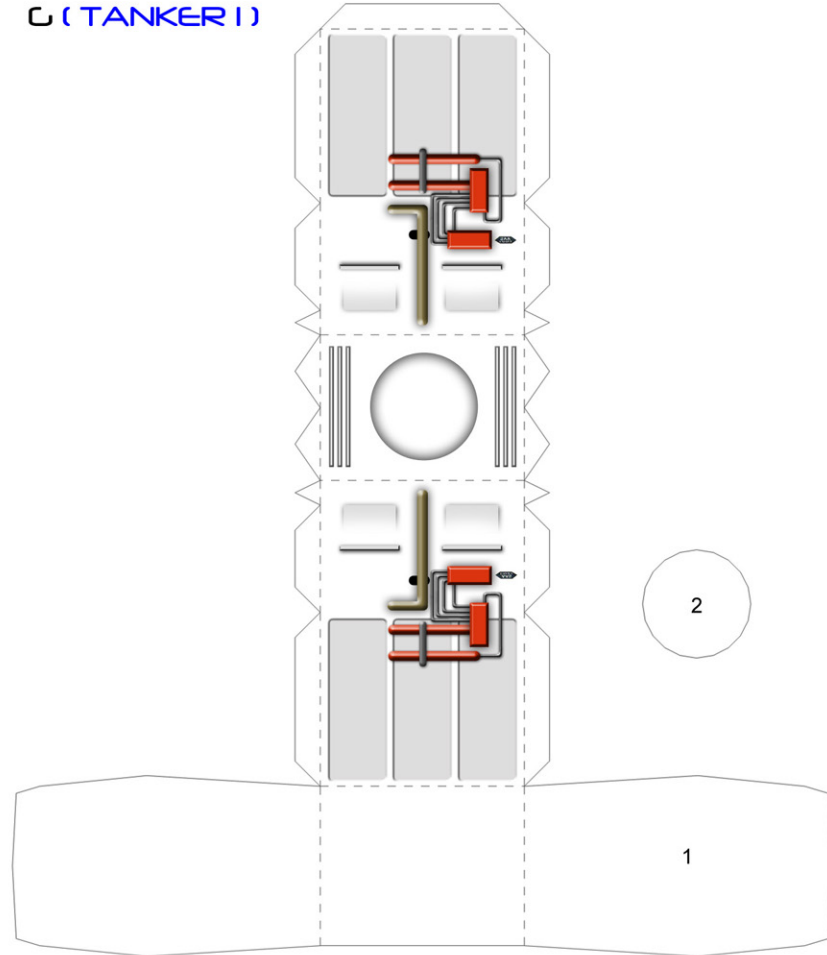
E (Transport 3)



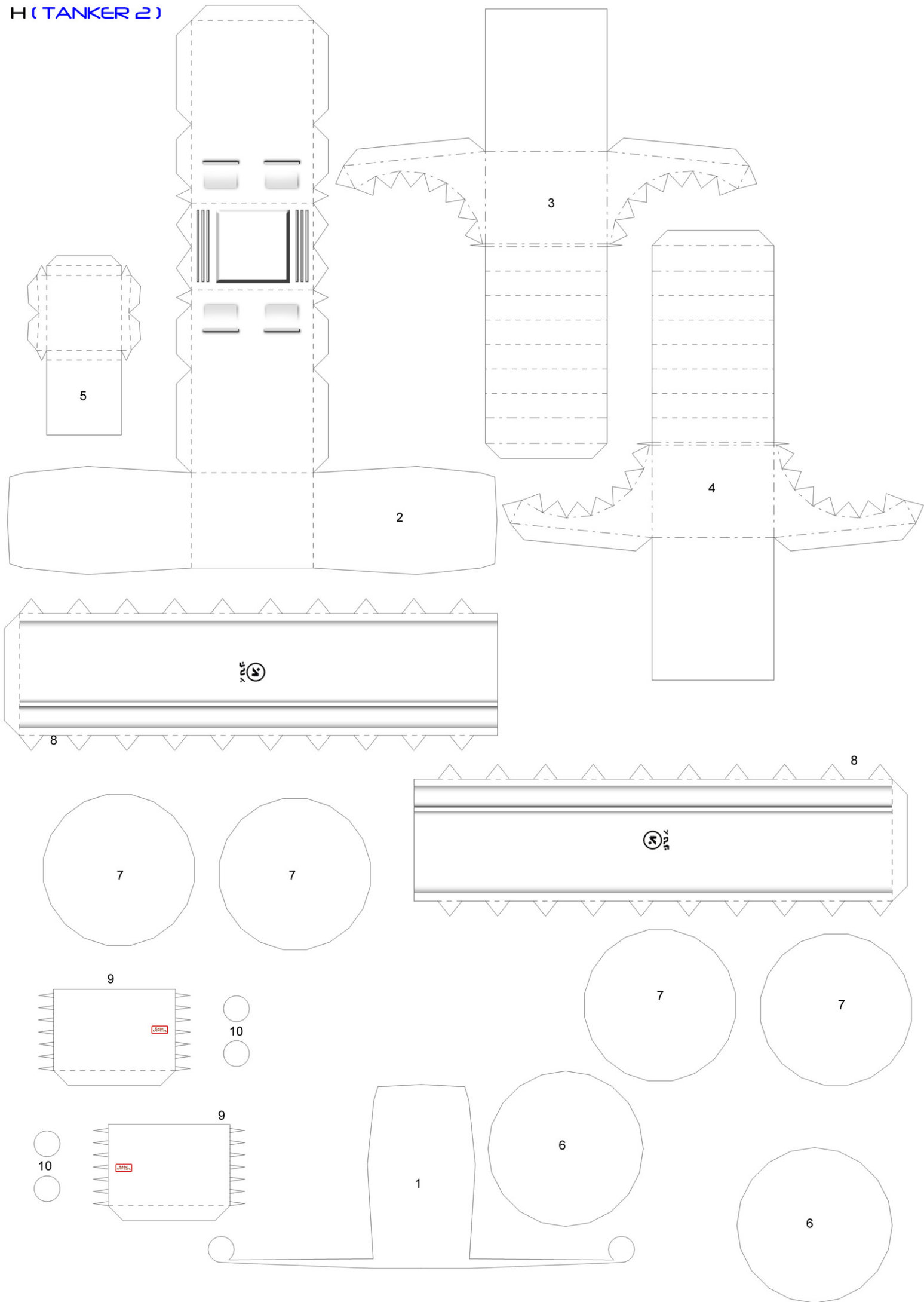
F (Transport 4)



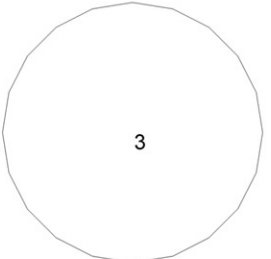
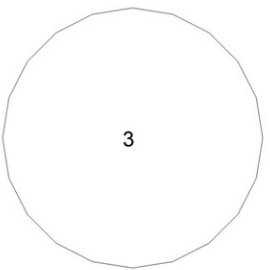
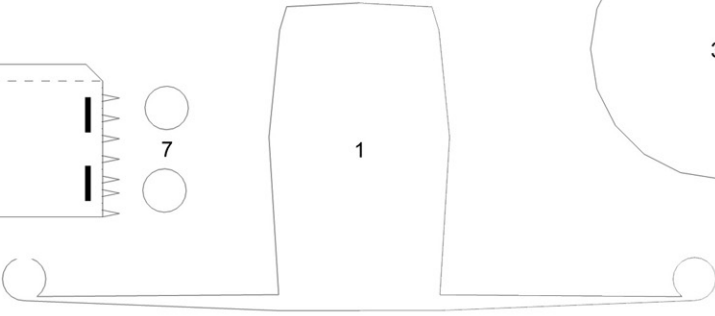
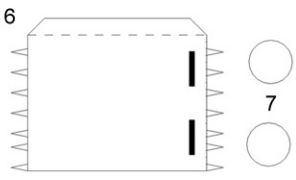
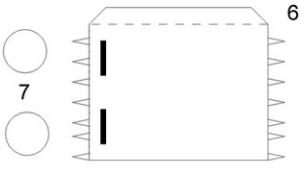
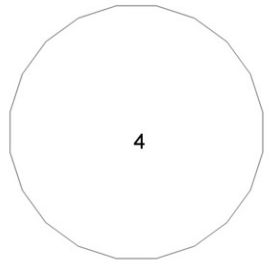
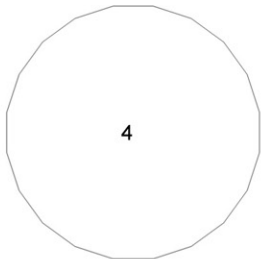
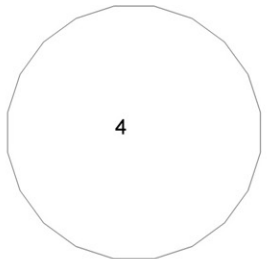
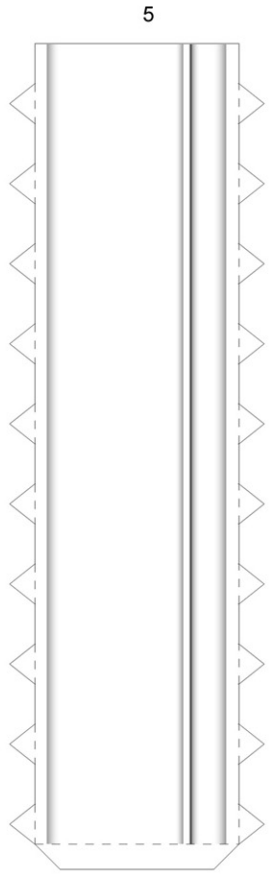
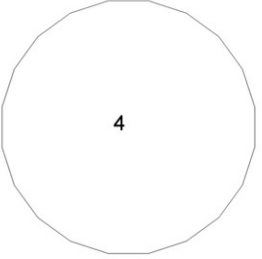
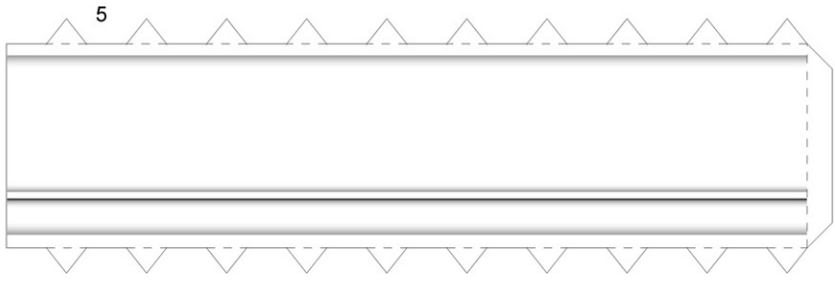
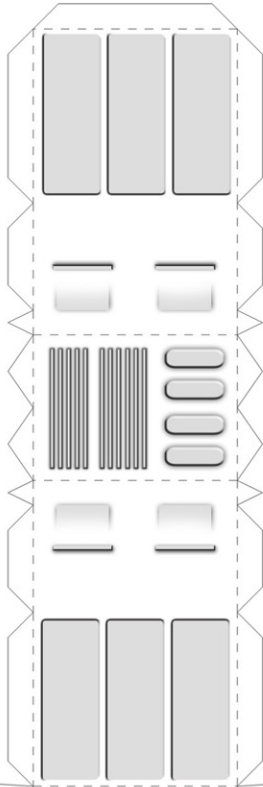
C (TANKER I)



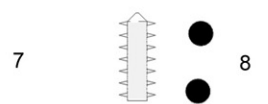
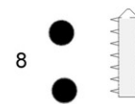
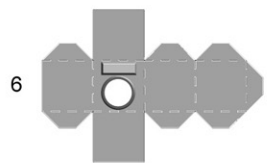
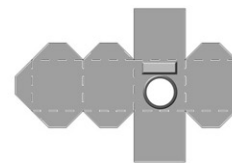
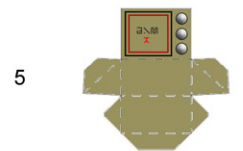
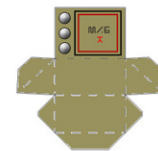
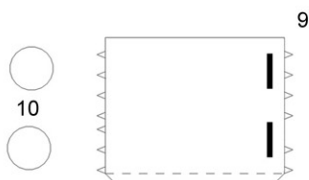
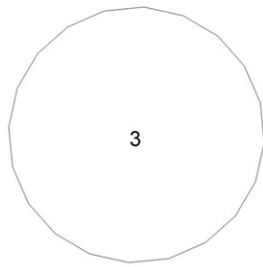
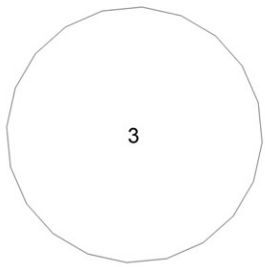
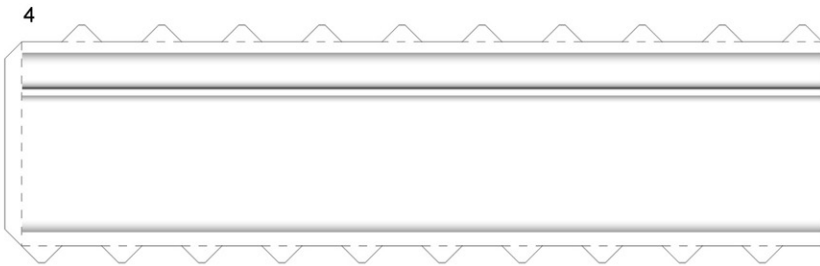
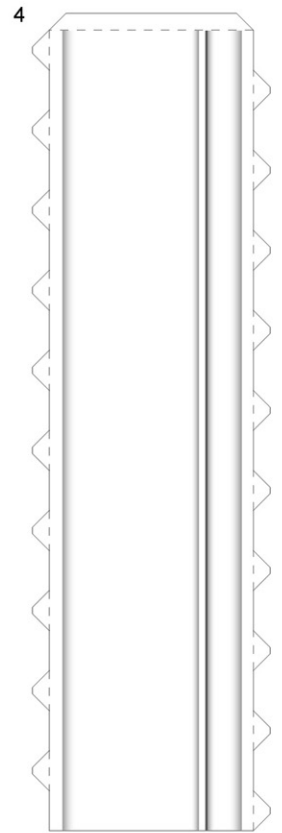
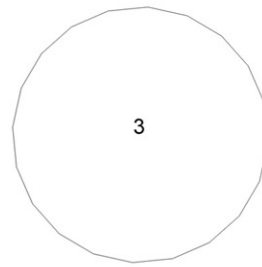
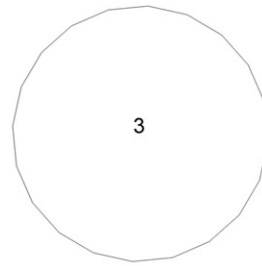
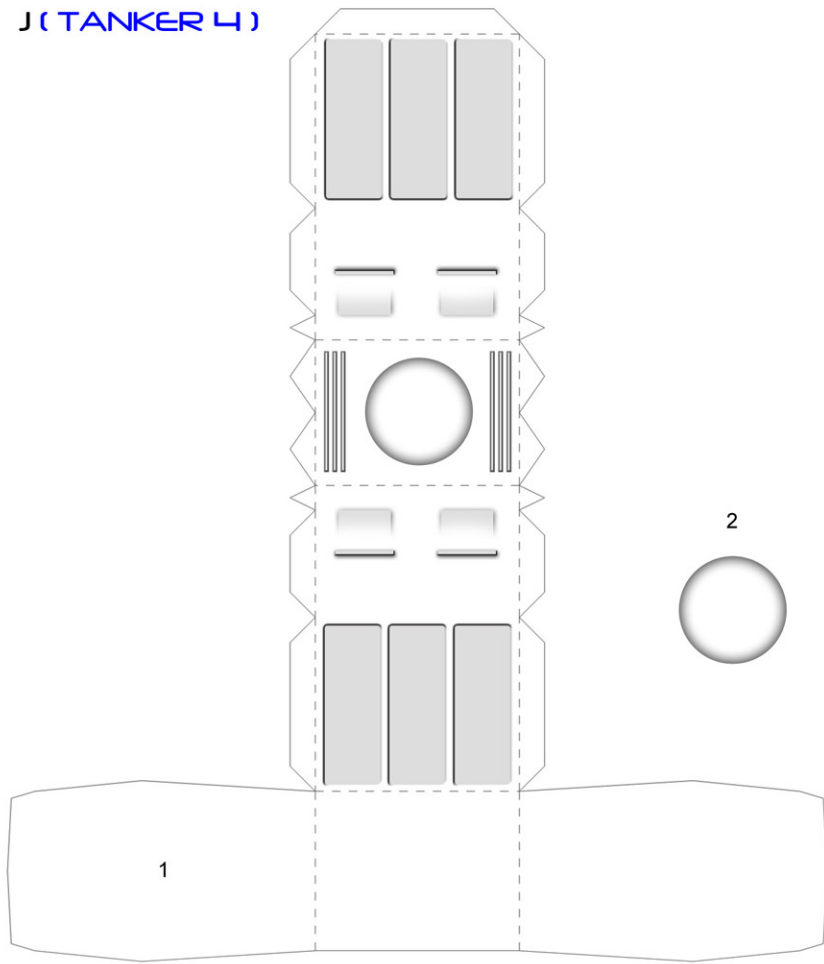
H (TANKER 2)



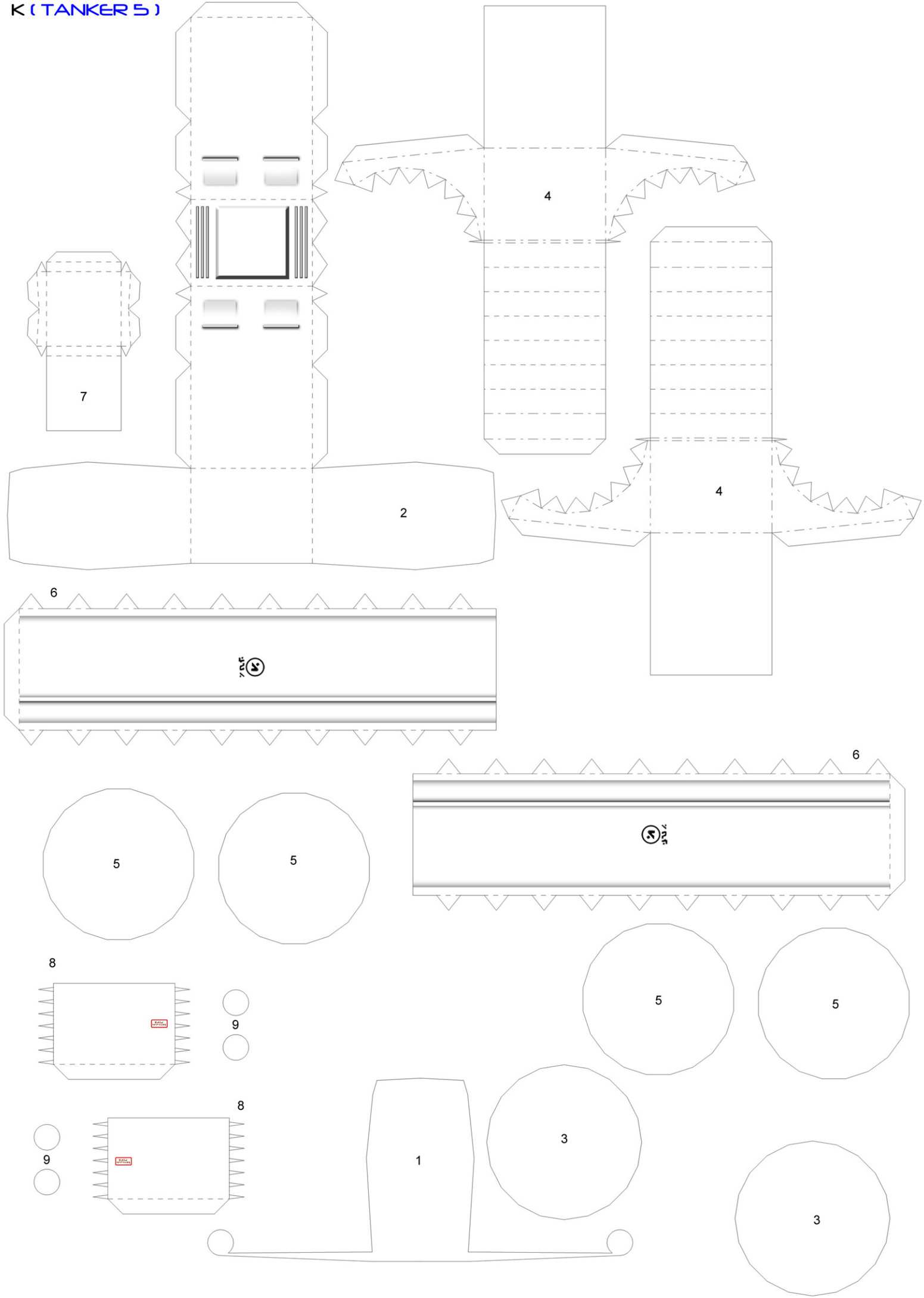
1 (TANKER 3)



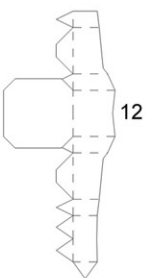
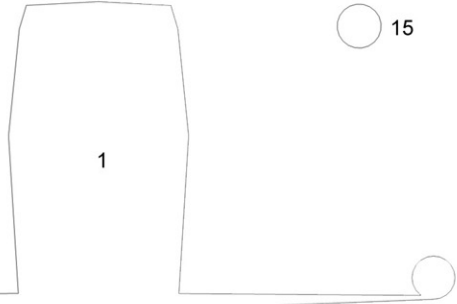
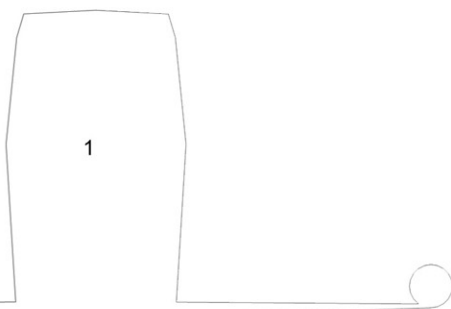
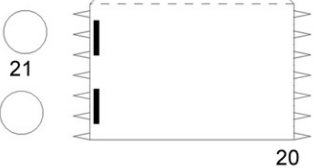
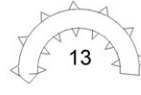
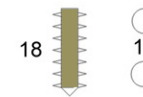
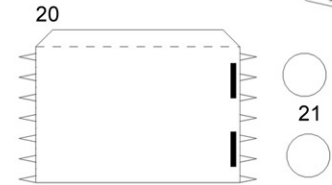
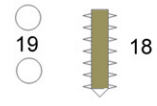
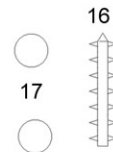
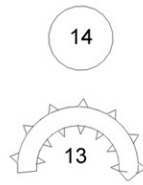
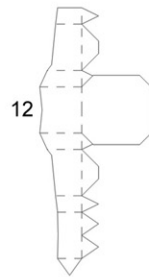
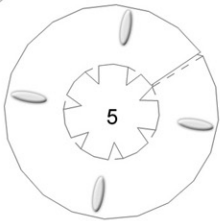
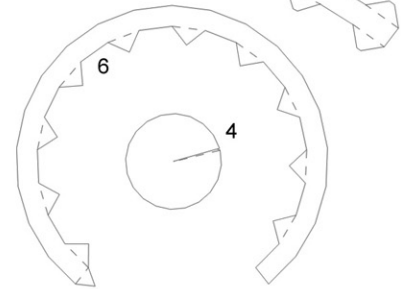
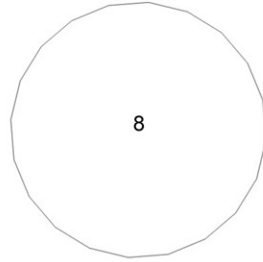
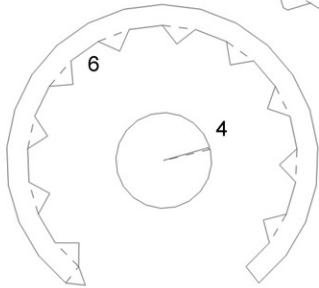
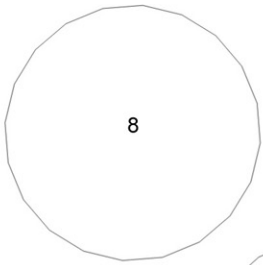
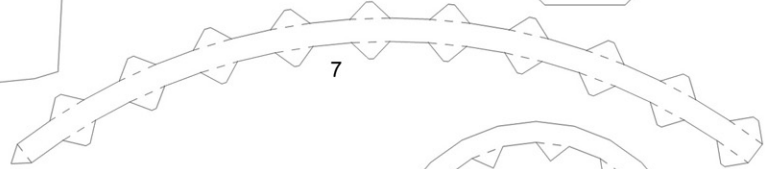
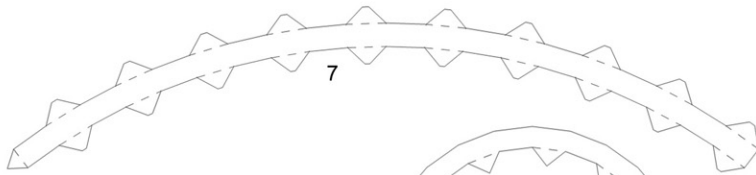
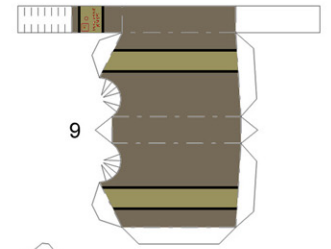
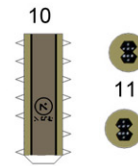
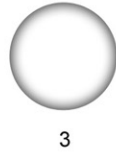
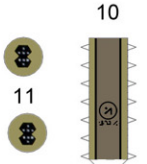
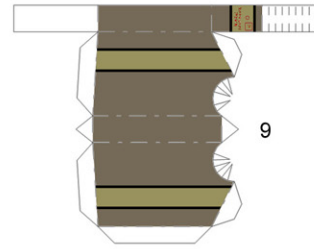
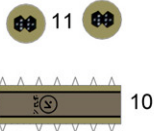
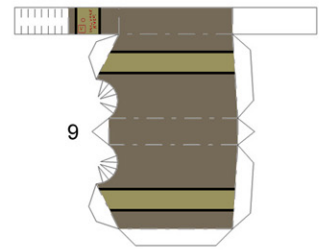
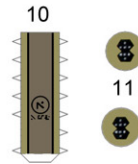
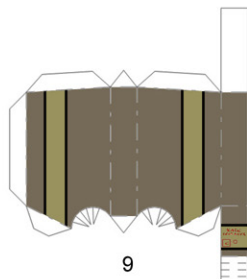
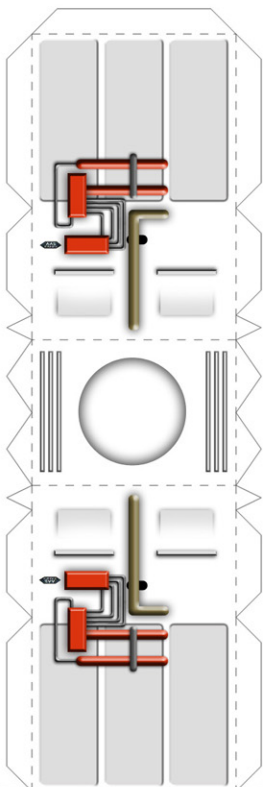
J (TANKER 4)



K (TANKER 5)



L (TANKER 6)



M (TANKER 7)

NOTE: Connects
to Parts on Pages
H and K

